



A TOUR OF SHIMANE TOWN

A SEASIDE TOWN DECORATED BY MYTHICAL LEGENDS





Evening view from the west beach

There are several beautiful sunset spots in Shimane Town. When the weather is nice, you can enjoy the wonderful view of the sun setting slowly on the horizon.



The Shimane Peninsula, rich in nature and surrounded by the sea and mountains, can be found in the northeastern part of Shimane Prefecture. And in the center of the peninsula, you can find Shimane Town.

From the Edo period to the Meiji period, it prospered as a resting port for Kitamaebune cargo ships, and at its peak, the streets were lined with boathouses and restaurants.

The huge underwater cave "Kaka no Kukedo", which is also recorded in the Izumo Fudoki, was designated as a "National Place of Scenic Beauty and Natural Monument" in 1927, and it is recorded that many famous writers visited it.

One of them, Lafcadio Hearn, a literary master of the Meiji era, recorded his deep impression in his book "Glimpses of an Unfamiliar Japan" after he visited with his wife Setsu, travelling by rickshaw and boat.

Shimane Town is a town where you can live with the sea, such as enjoying the magnificent view of the setting sun over the Sea of Japan, and the rows of cherry blossom trees that bloom on Cherry Road along the Rias coast.



Kaka-no-Kukedo Sightseeing Boat

There are two main caves, New Kukedo is the cave of (Shinto) Gods, and Old Kukedo cave is the cave of the Buddha, making it a rare case where both Gods and Buddha are enshrined. You can enjoy the 50-minute boat trip on the "Kaka-no-Kukedo Sightseeing Boat" that visits these two caves. (Available March-November)

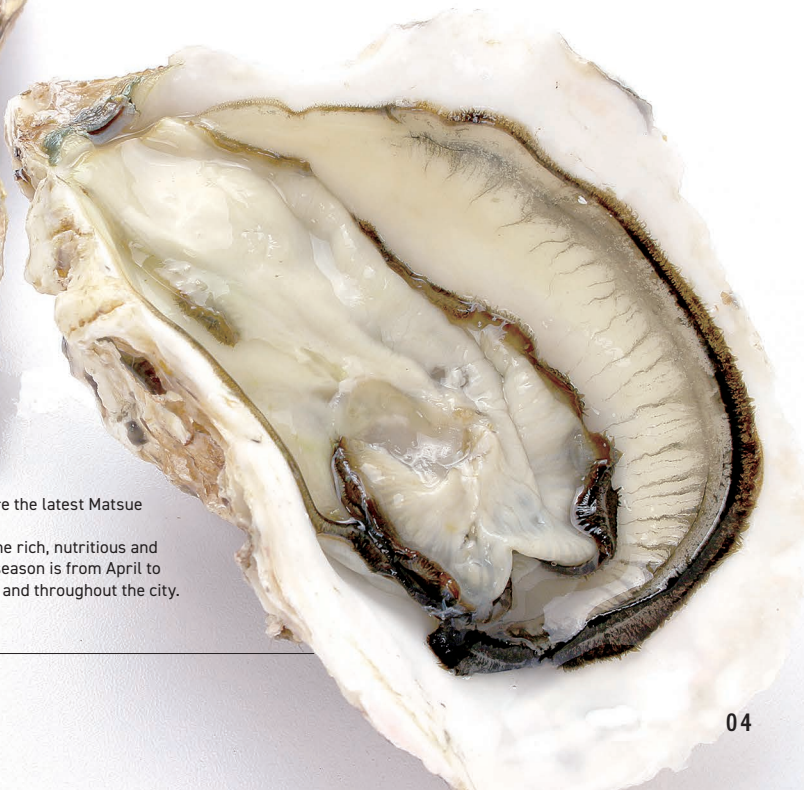
Shimane Town has been inhabited for a long time and later prospered as a gateway to the sea. The town was crowded with many boathouses, and the cargo of visiting Kitamaebune cargo ships was brought to the Matsue domain by waterway, and visitors shared stories of lifestyles and beliefs different from those of castle towns and rural areas.

Seafood



Seafood - Matsue Iwagaki Oysters

The oysters grown in the Sea of Japan in Shimane Town are the latest Matsue specialty: "Matsue Iwagaki". Raised mainly in the bays of the Sezaki and Noi districts, the rich, nutritious and plentiful flesh is perfect for consumption. The harvesting season is from April to July, and you can enjoy them at various events in the town and throughout the city.



Superb views



History

Kaka's New Kukedo is said to be the birthplace of Sada-no-Okami, one of the four central Izumo gods. Looking for a place to give birth to Sada-no-Okami, Mother Goddess Kisakahime-no-mikoto saw the hidden door and said, "Is it a dark cavern?" and shot into the cave with a golden bow and arrow. It was. At that moment, the inside of the cave was shining with the bright light that came in, so Kisakahime declared "it is radiant" or, in the old Japanese of the gods of Izumo, "kakayakeri." That is said to be the origin of the place name Kaka.



Ema

At Kaka Shrine, there are six large wooden plaques (ema) dedicated to blessing for the safe passage of ships. The largest one is 340cm wide, and they include the "warrior ema" depicting a battle from the Warring States period and a "boat ema" depicting the Kitamaebune cargo boats, which conveys glimpses of a time of maritime prosperity.



New Kukedo (Shinto God's cave)

New Kukedo is a large and open sea cave, and on days when the waves are calm, you can explore it on a sightseeing boat. According to the Izumo Fudoki, it was the birthplace of Sada-no-Okami, and where, according to legends, his mother used a golden bow and arrow to bring light to the cave. The cave is also known as a power spot where you can feel the strength of the legends. Author Lafcadio Hearn recorded the praise "I have never seen a more beautiful cave". A sightseeing boat operates from Marine Plaza Shimane (March-November).



Old Kukedo (Buddha's Kukedo)

"Kaka's Old Kukedo" is a cave with a myriad of small stone towers, called "Sai no Kawara". It is said to be a gathering place for the souls of deceased young children. Stories say that they gather stones from the riverbank and pile them up into towers while crying "I miss my father and my mother," but oni demons come and kick down the piled towers. However, a Jizo Buddha appears to drive away the demons and help the spirits of the young children.

Cherry Road

In commemoration of the opening of the prefectural road that connects the Nonami area and the Kaka area, about 700 cherry trees were planted over a 5 km line, making a beautiful contrast between the pink of the cherry blossoms and the blue of the Sea of Japan. There are several observatories and the "Sakura Park".





Susumi Coast At this coast, you can see the beautiful “laundry rocks” that have been formed over the years. The rushing waves breaking on the scraggy rock surface creates a spectacular view.



Seven Caves of Tako

Seven caves of varying sizes formed on the cliff of 50m tall Cape Takobana. Nine entrances can be seen from the sea. A sightseeing boat is in service from Marine Plaza Shimane. (March-November)



Marine Plaza Shimane

2F: Shimane Peninsula and Shinjiko Nakaumi Estuary Geopark - Matsue Visitor Center

As the boarding point of the Kaka-no-Kukedo Sightseeing Boat and by offering information on sightseeing and culture in Shimane Town, this facility serves as a base for visiting the area. The restaurant "Nagisa" is popular for its sazae (turban shell) and rice set meal. They also sell local specialties such as fig jam.

270-1 Kaka, Shimane Town
 TEL 0852-85-9111
 Restaurant "Nagisa"
 Open 11:00-15:00 (closed Tuesdays)





Konami beach

This area features a clear sea and white sand beach, with a shallow swimming area, so parents and children can enjoy it safely.

The campsite also has a parking lot, rest area, shower and toilet.



Nonami Beach Resort

It took 15 years to develop an ocean front that protects local residents from the strong winter winds and waves peculiar to the Shimane Peninsula, while also matching the local scenery and be a comforting place to spend time. This facility facing the Nonami Beach was completed in 2010 and is fully equipped with an artificial turf sports plaza, a restroom facility with toilets and shower rooms, green space, and a parking lot. It is popular not only as a place of relaxation for local residents, but also as a tourist facility where you can enjoy swimming in the sea.



Katsurashima beach

Katsurashima is a small island with a circumference of about 2 km connected to Kaka Port by Kanzaki Bridge, and there is a rest house where you can enjoy swimming, camping, and surf fishing.

Katsurashima Mini Visitor Center TEL 0852-85-2902



Oki Islands



The fun of staying at a seaside inn is the fresh seafood.

After feasting to your heart's content, you can rest your tired mind and body.

All the local inns boast warm hospitality as if you were family.

Marine Park Takobana

Known as the "Cape in the Sky", the hill of Takobana is the northernmost tip of the Shimane Peninsula. From the 15 cabins with their panoramic view of the magnificent azure Sea of Japan, you can see both the rising sun and the setting sun from the horizon, and at night you can see fishing fires, a starry sky. There is also a well-equipped open grass campsite, for even greater contact with nature.

270-1 Tako, Shimane-cho, Matsue
TEL 0852-85-9111



Minshuku Fukushima

326 Noi, Shimane-cho, Matsue
TEL 0852-85-2364



Minshuku Yamane

13-3 Noi, Shimane-cho, Matsue
TEL 0852-85-2396



Minshuku Nakayoshi

2281 Nonami, Shimane-cho, Matsue
TEL 0852-85-3150





Shimane Town Sakura Festival

Early April, Oashi (Marine Gate Shimane)

In addition to cherry blossoms, you can also find seasonal seafood such as Matsue Iwagaki oysters and other special products, foods and drinks of Shimane Town.

Shimane Town Festivals

We hold hearty and fun events where you can taste local foods and enjoy the seasons, all made possible by the work of local residents.



Shimane Town Fureai Festival

Early November

There are a lot of things to enjoy at this community festival, which also celebrates the autumn harvest, such as eating local specialties and even a chance at hand-catching some of them, free crab soup, lotteries, games, etc.



Sea Town Summer Festival

July, Konami Beach

Full of beach events such as beach volleyball tournaments, beach flag races, and clam digging experiences.



Gacchi Festival

October 23, Nonami

Every year, on October 23, the day before the annual festival of the Hinomisaki Shrine in Nonami, a procession, including a portable shrine, parades through the town. The name "Gacchi" refers to the role responsible for purifying festival goers. The Gacchi drink ritual sake (omiki) and run around purifying people by hitting them with "shibo" made of straw.





< Contact Us >

Matsue Tourism Association Shimane Town Branch

(Matsue City Hall Shimane Town Branch Office Regional Promotion Division)

1414 Kaka, Shimane-cho, Matsue-shi, Shimane 690-0401

TEL 0852-55-5722 FAX 0852-55-5739

E-mail: shimane-chiiki@city.matsue.lg.jp

Shimane Town Sightseeing Navi <http://shimanechou.kankou-matsue.jp/>